



RVA-200

Volume Controller for
MATRIX-A8 with 2 Outputs

Features

- MATRIX-A8 channel Out volume control
- 2 x analog outputs
- Input / Output channels routing
- LCD screen with output level display
- RD port IN, for connection to MARIX-A8
- RD port LINK for daisy chain connection
- 100 m CAT5e cable length

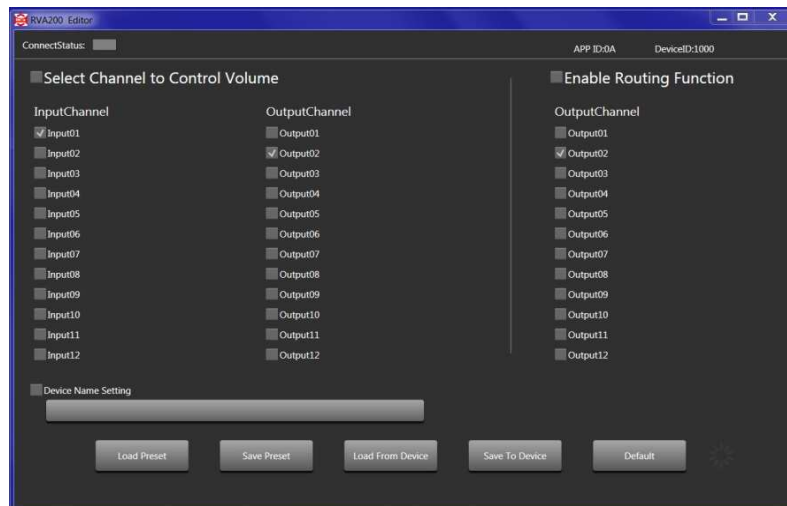


The RVA-200 is a wall mounted remote volume controller with 2 x analog outputs. It can adjust the volume of any output of the MATRIX-A8 regardless the location of the box. The controller can also route any input to any output directly by using its control knob and its display, without the need of the Editor Software. The RVA-200 is also used as a D/A converter for the digital outputs of the MATRIX-A8. Thus, the audio signal can be digitally transported over long distances (100 m) and then converted without loss of quality.

- LCD screen**
Display of the volume level and the signal routing.
- Volume and routing control**
Control of the output volume.
Access to the inputs and outputs routing menu by pressing the knob.
- RD port IN**
Connection to MATRIX-A8.
The maximum CAT 5e cable length is 100 meters.
- Analog OUT**
2 channel analog line Outputs assigned to RD port 9/10 or 11/12 of MATRIX-A8



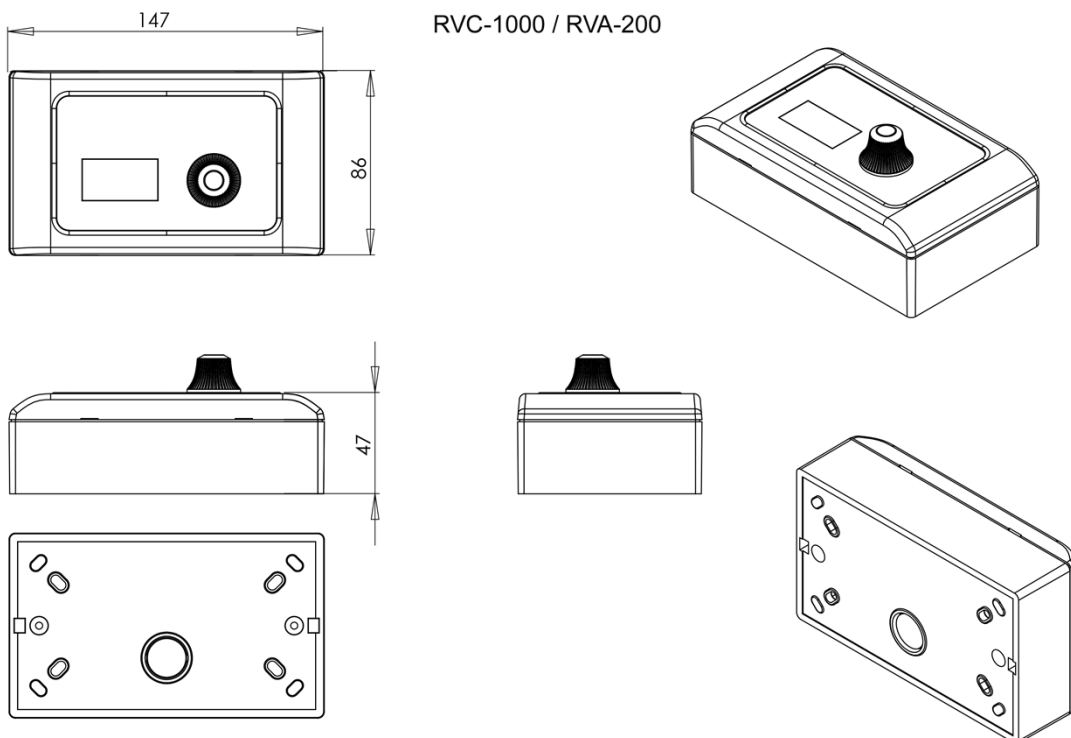
Software Editor



Specifications

Analog Outputs x 2	Active Balanced
Connectors	Euroblock 1 x 6-pin, 5 mm pitch
Impedance	200 Ω 1%
Maximum Output	+20.0 dBu
Frequency Response	20-20 kHz
Dynamic Range	105 dBu
Crosstalk	104 dB
LCD Display	
Volume range	-120dB - 0dB
Ports	
RD net to Matrix	RJ45, 100 m CAT5e cable
Dimensions L x H x D	147 x 86 x 47 mm

Specifications subject to modification without notice



SEIKAKU TECHNICAL GROUP LIMITED
 NO.1 LANE 17, SEC.2, HAN SHI WEST ROAD, TAICHUNG 40151 TAIWAN
 Tel: +886-4-22313737 Fax: +886-4-22346757 www.seikaku.hk