

### Features

- Transparent transmission through WLAN
- Multi client-side connections
- Over 30 meters range
- Audio parameters setting by PC software



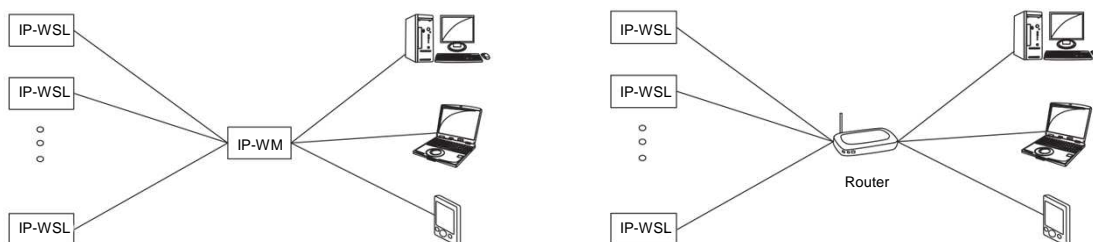
IP-WM and IP-WM are modules used for wireless communication between audio devices. One of the main uses is the parameter setting of active speakers by a PC or tablet. Both modules use an IP configuration in a LAN environment. IP-WM is a master module which can solely communicate and control the speakers one to one. It can be used as a router, connecting multi IP-SWL modules and controlling multi speakers. IP-WSL is a slave module which can communicate with IP-WM module or a router. One IP-WSL module can only be assigned to one speaker.

### Specifications

#### IP-WM / IP-WSL

- Supports 802.11b/b/n wireless standard
- Support break self-test and reconnection
- Stable, reliable and high speed full duplex data transmission
- Set network parameters, serial port parameters and other related parameters by PC web browser
- Set audio parameters by PC software
- DHCP function
- Support TCP, UDP, HTTP, ICMP, ARP protocol
- Baud rate: 1200 ~ 115200
- Effective distance: at least 30 meters
- IP-WM supports AP (Access Point) mode
- IP-WSL supports STA (station) mode

*Specifications subject to modification without notice*



**SEIKAKU TECHNICAL GROUP LIMITED**

NO.1 LANE 17, SEC.2, HAN SHI WEST ROAD, TAICHUNG 40151 TAIWAN

Tel: +886-4-22313737 Fax: +886-4-22346757 www.seikaku.hk