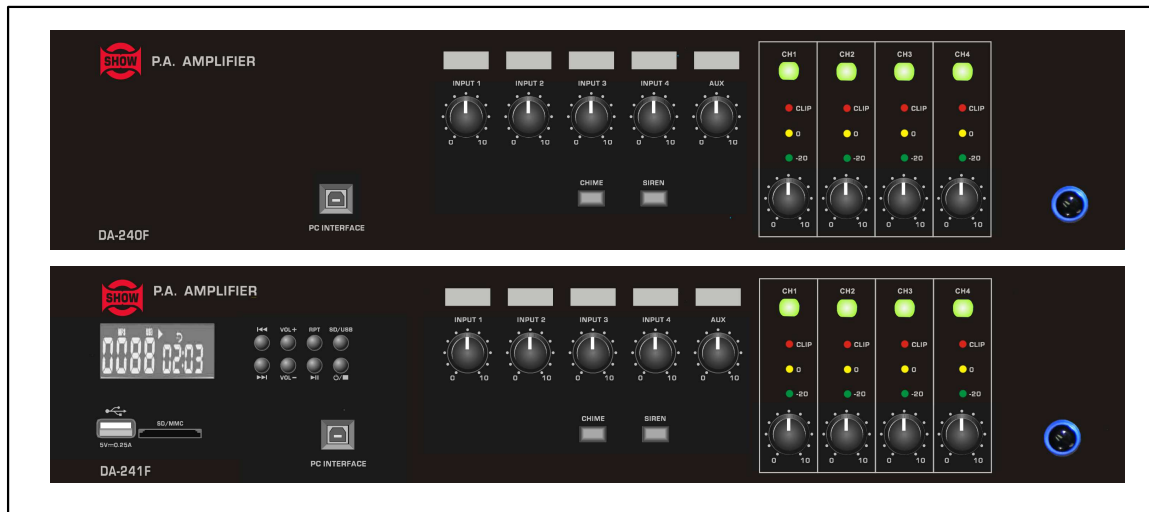




DA-240F / DA-241F

Four Channel Output
Public Address Amplifiers



Features

- 4 x Mic/Line Inputs, 2 x Aux Inputs
- 4 x 240 W / 70 -100 V Outputs
- MP3 player for DA-241F
- Siren & Chimes
- DSP functions
- RS-232
- USB interface for PC Editor
- Optional Dante Card

DA Series is an upgraded version of the most successful Public Address amplifiers from the brand. Now, these devices feature new Class-D power technology, DSP functions, software control and optional Dante networking in one single 2U rack package. It is a compact, easy, stand-alone and cost effective solution for paging and broadcasting music in bars, restaurants, shops, offices and small to medium size venues.

The DA-240F and DA-241F have the same characteristics; both models are differentiated by a built-in MP3 player for the DA-241F. 4 x Mic/Line inputs are available, plus 2 x Aux inputs for a stereo source, with volume knobs for immediate adjustment. Mute control for the priority Microphone, chimes and siren sounds can be set from the rear and front panels easily. For optimized sound quality, DA Series feature a DSP engine where functions can be edited via a PC, including Gain, Parametric EQ, Delay, Compressor, Bandpass Filters, Crossover Filters, Routing and Effect. The optional Dante card offers networking facilities, especially for long distance audio transport and internet operability.

A RS-232 port is available as well, for third party equipment remote function. An additional control output 1 W into 8 Ω is available for monitoring and a telephone paging input can be used for outside priority message.

Specifications

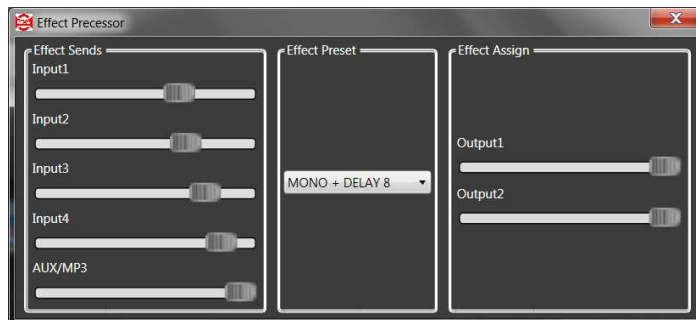
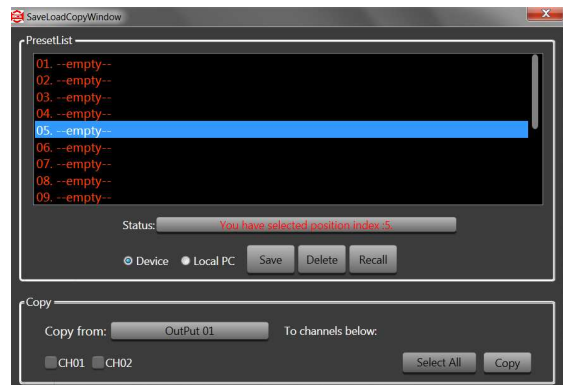
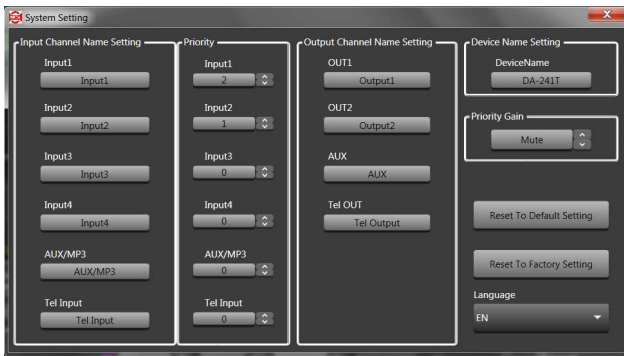
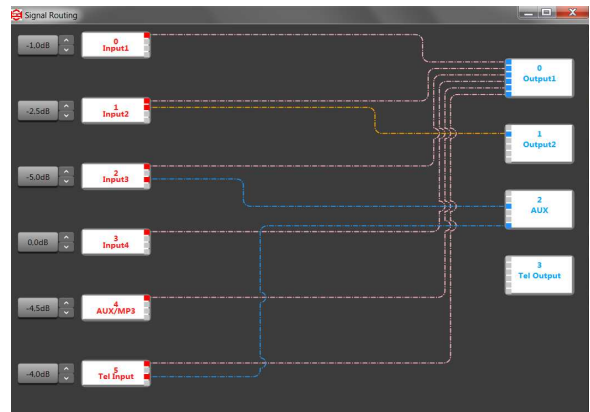
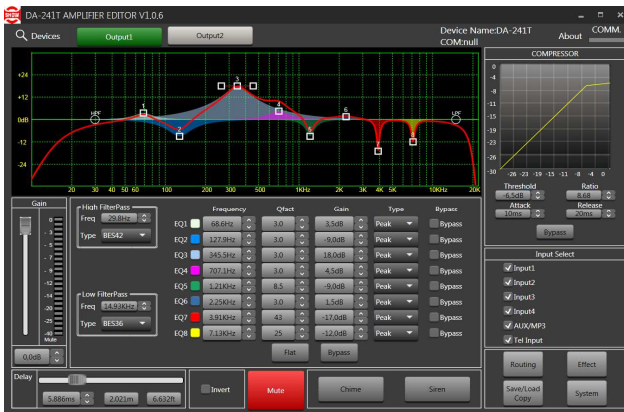
DA-240F / DA-241F

Power Supply	AC 115/230V 50/60Hz
Power Output	DA-240F / DA-241F : RMS 240W x 4 (70V / 100V)
Input / Output	DA-240F: 4 x Mic/Line IN , 2 x Aux IN / 4 OUT DA-241F : 4 x Mic/Line IN , 2 x Aux IN (MP3 Player) / 4 OUT
Frequency Response	Mic: 80Hz-16kHz (+/-3dB) Aux: 50Hz-20kHz (+/-3dB)
Input Sensitivity (balanced @ 1kHz)	Mic (balanced): -50dBv +/-2dBv – 24V Phantom Power Line (balanced): -10dBv +/-2dBv Aux (unbalanced): -10dBv +/-2dBv
External Ports	USB Port for PC software control RS-232 Interface for third party software control
DSP Functions	Routing/ Crossover/ EQ/ Delay/ Compressor etc.
THD+N (1kHz/-3dBv)	< 0.1%
S/N Ration	Mic: > 60dB / AUX: > 70dB
CMRR (balanced @ 1kHz)	> 60dB
Crosstalk (1kHz)	> 60dB
Output	70V / 100V switchable
Line Out	1V+/-0.2V
MOH.	1W@8 Ω / 1V@600 Ω
TEL. Input	-10dBv/-2dBv
Dimension (W x D x H)	434 x 353 x 88mm (17.1" x 13.9" x 3.47"
Weight (Approx.)	7kg (15.43 lbs)

Specifications subject to modification without notice

Editing Software

The following screens show the editing software windows for 2 channel output models DA-240/241T. The editing software for DA-240/241F is similar but includes 2 additional output channels.



Rear panel

