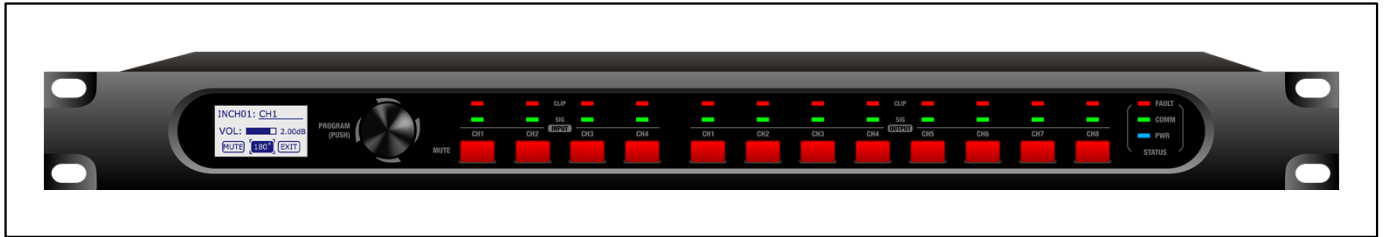




DLM-408 PLUS Speaker Management System



Features

- 4 x analog Inputs
- 8 x analog Outputs
- OLED display
- Ethernet and RS232 ports
- DSP functionalities
- PC Editor software

DLM-408 PLUS is a digital processor dedicated to speaker management. It features a DSP to control input and output signals including a flexible Matrix function routing any IN to any OUT. Two way, three way and four way speaker systems can be managed with quick and easy actions through the PC editor software.

The design of the DLM-408 PLUS is based on a Matrix platform, so for some applications the device can be used for simple zoning limited to settings and corrections for speakers.

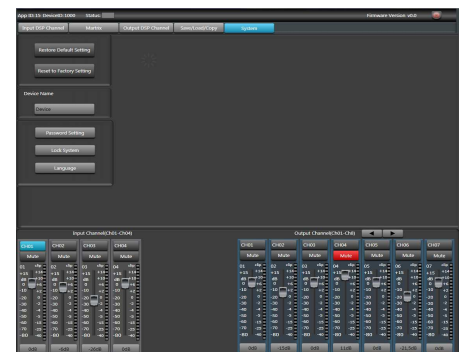
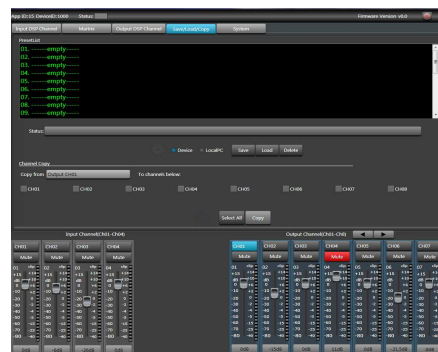
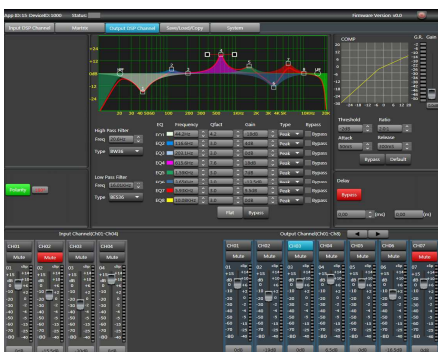
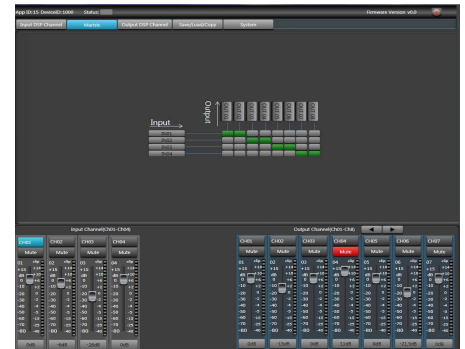
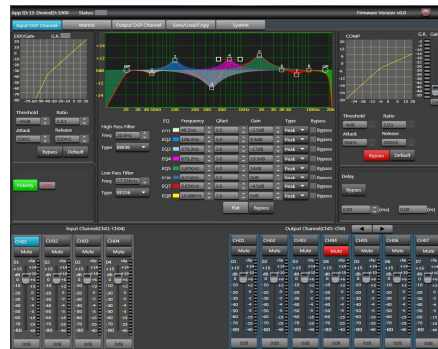
The 4 Inputs and 8 Outputs are the ideal specifications to drive a speaker system featuring High, High-mid, Low-mid and Sub components in stereo mode.

The Inputs and Outputs used XLR connectors giving more flexibility to the device to perform in touring and fixed installations. The friendly PC Editor makes any setting or modification easy. It reports the control status in real time with clear graphic indications for all functions.

One LAN port makes easy the connection to the PC for the editing functions. The RCNET ports, based on RS-485 transfer protocol, are used for the link of several devices. A RS-232 port is available for a remote third party equipment.

DSP Functions

- Gain
- Gate / Expander
- Parametric EQ
- Delay
- Limiter / Compressor
- Bandpass Filters
- Crossover Filters
- Matrix



Specifications

Inputs	Electronically balanced
Frequency Response to Main Output	20Hz~20kHz at 0dBu +/-3dB
Distortion (THD & N) to Main Output	<0.01% at 0dBu 1 kHz
Maximum Input Level	+20dBu
Outputs	
Max Output Level	+20dBu
SNR (Signal to Noise Ratio)	108dB
System Crosstalk	
Input to Output (at +4dBu 1kHz)	-90dB
Adjacent Channel (at +4dBu 1kHz)	-90dB
Noise Gate	
Threshold Range	-80dBu ~ +20dB
Attack Time	10ms ~ 150ms
Release Time	5ms ~ 2s
Ratio	1:1 to 10:1
Compressor	
Threshold Range	-30dBu ~ +20dB
Attack Time	10ms ~ 150ms
Release Time	10ms ~ 1s
Ratio	1:1 to 10:1
Gain	0dB ~ +24dB
EQ	
Low (Low Pass or Low Shelf)	19.7Hz ~ 20.1kHz ±18dB
Low Mid	19.7Hz ~ 20.1kHz ±18dB
High Mid	19.7Hz ~ 20.1kHz ±18dB
High(High Pass or High Shelf)	19.7Hz ~ 20.1kHz ±18dB
Other	
Impedances	10kΩ
Operating free-air temperature range	0 ~ 45°C
Power Supply	100-240V ~ 50/60Hz; T1.6AL; 20W max

Specifications subject to modification without notice

